

Biologically-derived Materials for Powering Next Generation Biomedical Electronics



Young Jo Kim, Ph.D.

Assistant Professor
Department of Chemical Engineering
University of New Hampshire

Implantable biomedical devices



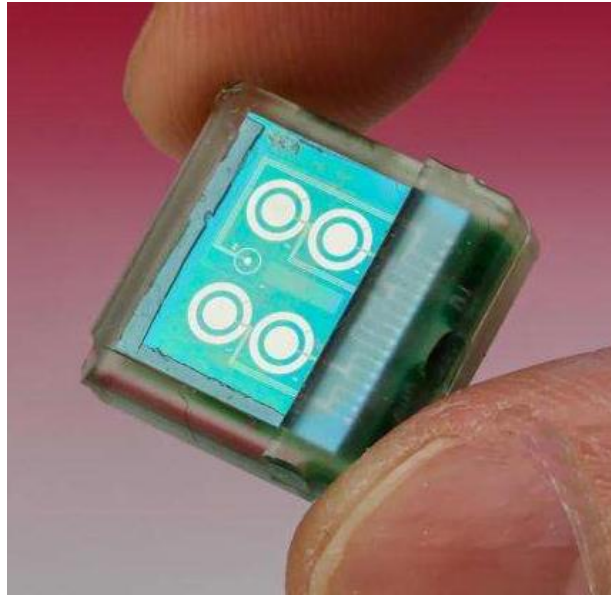
Tissue
stimulation



*Stimulate deep brain
for treating obesity*



Biosensor



Monitor pH, T, and glucose

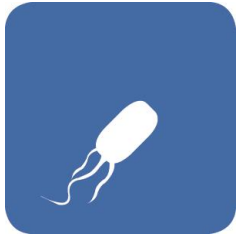


Controlled
release

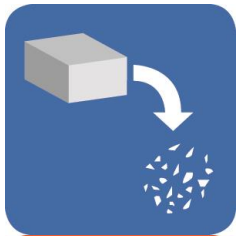


Deliver drugs

What if we could implant the devices



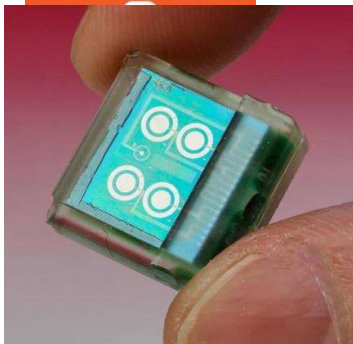
Reduce infection risk



Temporary inflammation



Cost-effective deployment



no batteries



Why Edible Electronics?

Most people feel comfortable with taking pills.

- Balance of functional device lifetime with rapid deployment
- Non-invasive, high patient compliance
- Reduced sterilization burden
- Obviate issues associated with chronic implants

Device comparison



Helius
(Proteus Biomedical)

PillCam
(Given Imaging)

Indication

Function

Device lifetime

Power source

Logic elements

Packaging

Size (D x L)

Mass

Retention risk

Retention Risks

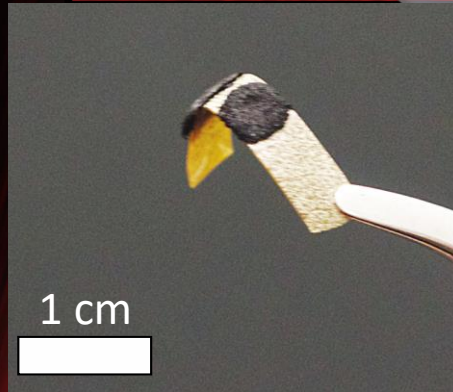


Size of Device

Edible Battery

operated by Na^+ in gastric fluid

- *Made of edible materials*
- *Temporary*
- *Non-invasive*



Cathode
 MnO_2

← **Electrically-
conductive
elastomer**

← **Anode**
Activated carbon

Ideal electrodes for edible electronics

Reliability



+

Safety



=



- + Long operational lifetimes
- + Robust performance
- + Manufacturing

- + Possible bioabsorption
- + Reduced risk of event
- + Materials of known risk



Inspired by *cuttlefish* ink



Eumelanins from cuttlefish (*sepia officinalis*)

- Homogeneous nanostructure (diameter= $\sim 100\text{nm}$)
- Stable (non-soluble) in aqueous solution
- Hydration dependent electronic-ionic hybrid conductivity

50 nm



Eumelanins in multi-scale

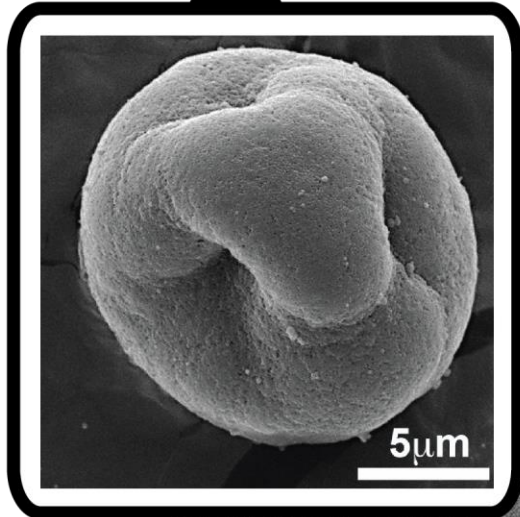
Length scale (m)

10^{-6}

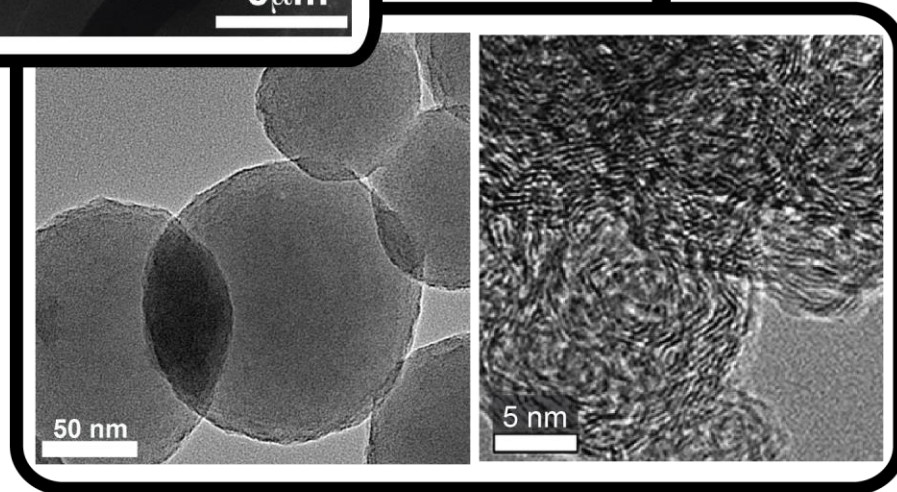
10^{-9}

10^{-12}

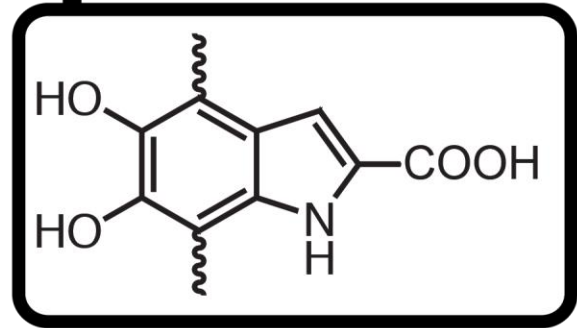
Micron



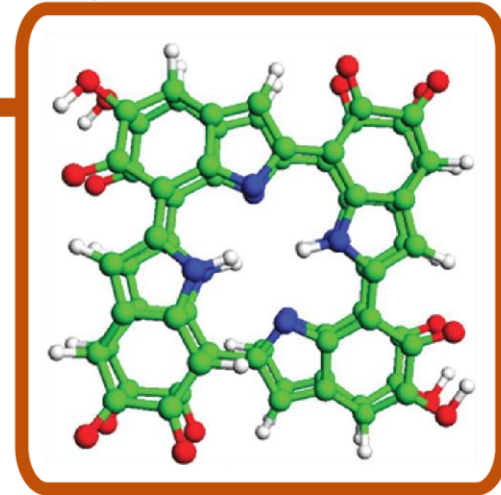
Nano



Molecular



Supramolecular



Is eumelanin a viable solution?

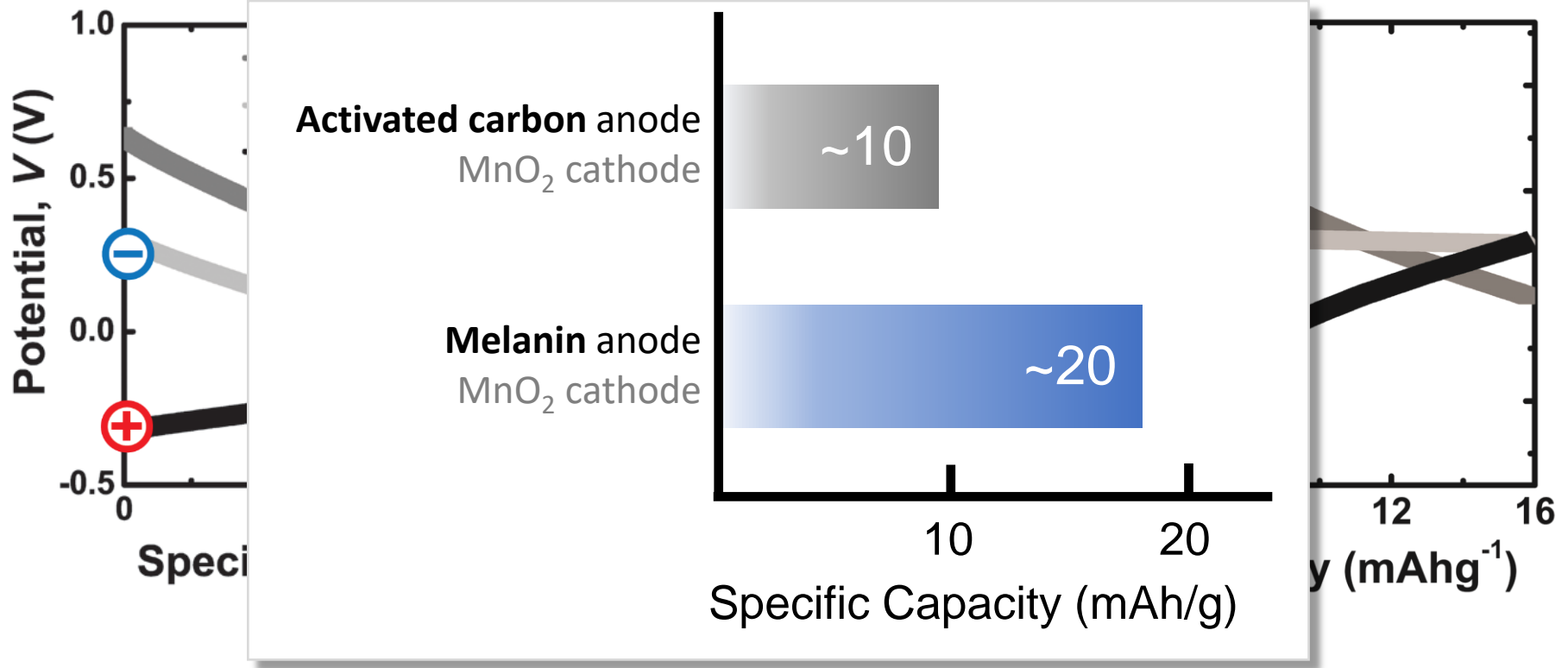
Activated carbon anode

MnO₂ cathode

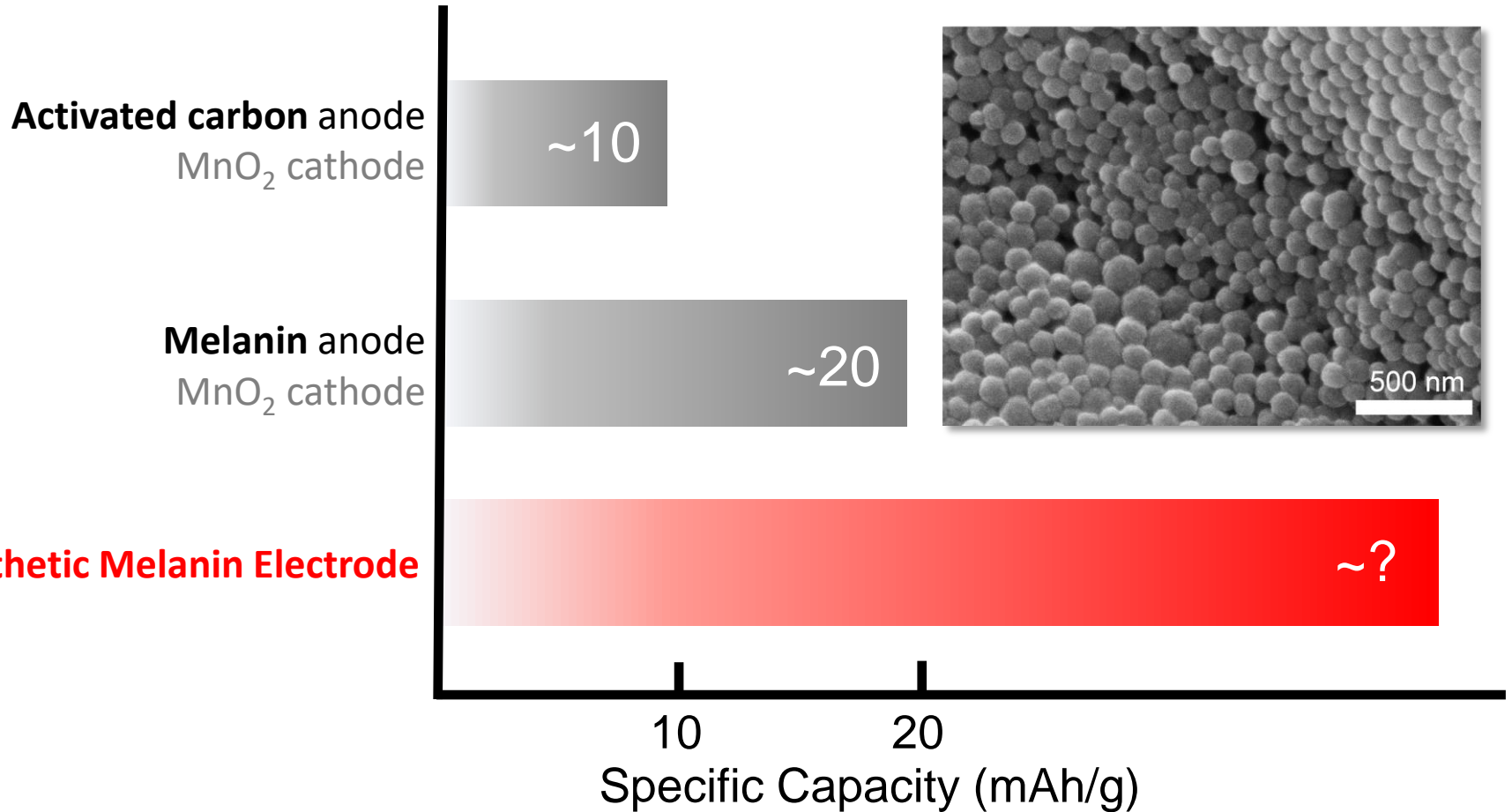


Melanin anode

MnO₂ cathode



Can we tune the capacity?

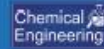


[P1801-02]



Biologically-derived Materials for powering next generation biomedical electronics

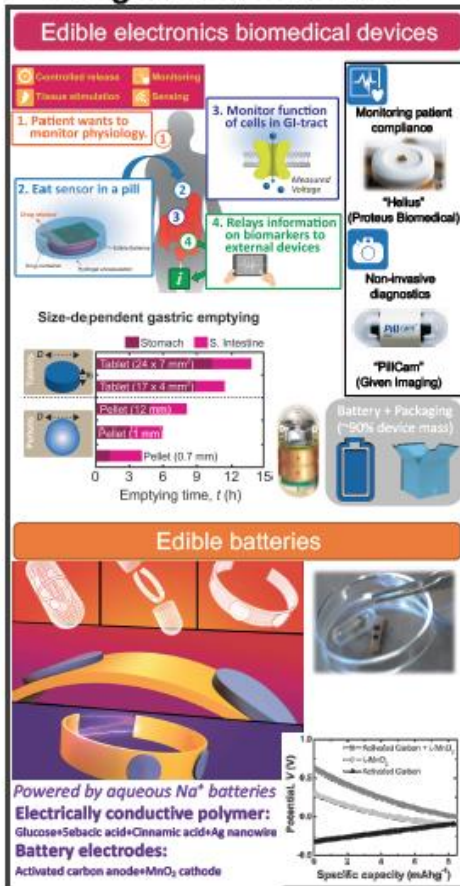
Young Jo Kim, PhD
Assistant Professor in Chemical Engineering,
University of New Hampshire, Durham NH 03824



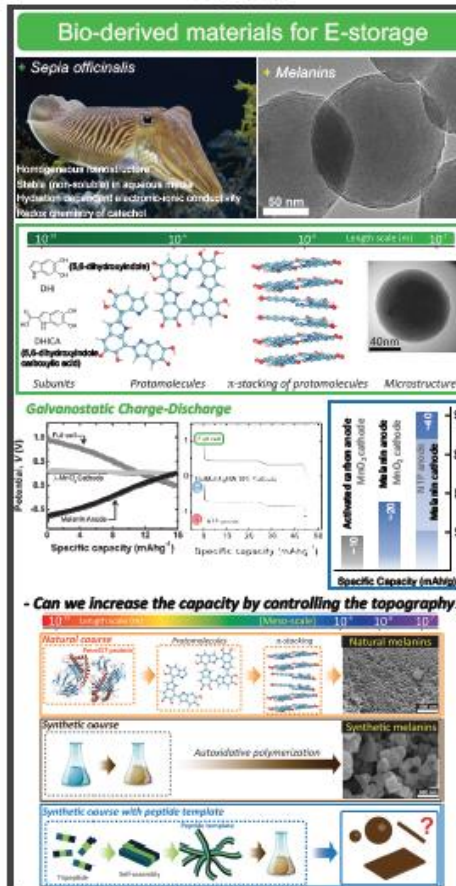
University of
New Hampshire



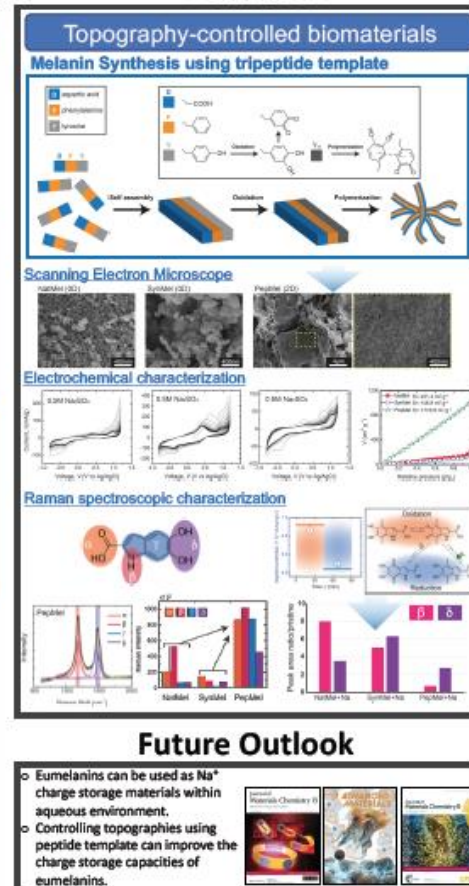
Background & Motivation



Results



Discussion





Thank you

